

CPR GUIDE

INFANT (< 1 Year)

In an emergency situation the DRSABCD flowchart must be followed first. If you have done so and deem CPR necessary for the infant then follow the diagrams below.

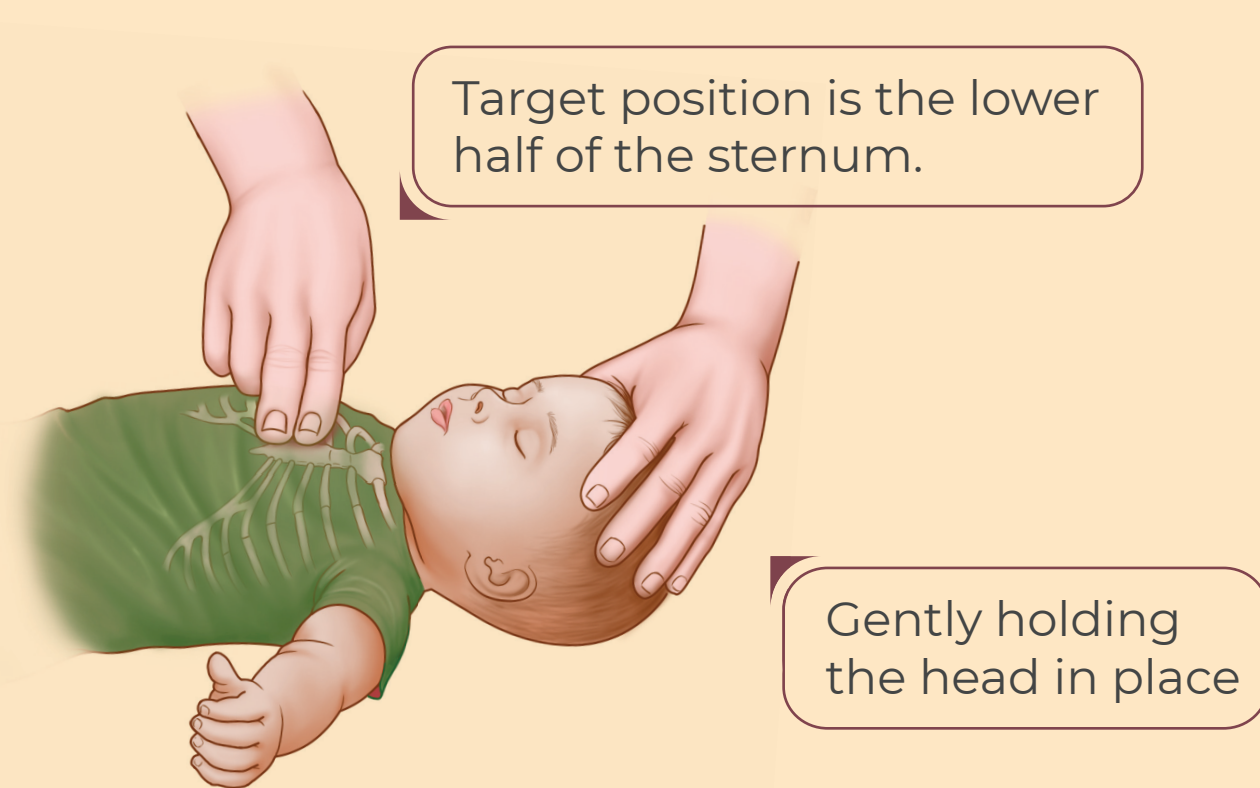


CPR is performed at a ratio of

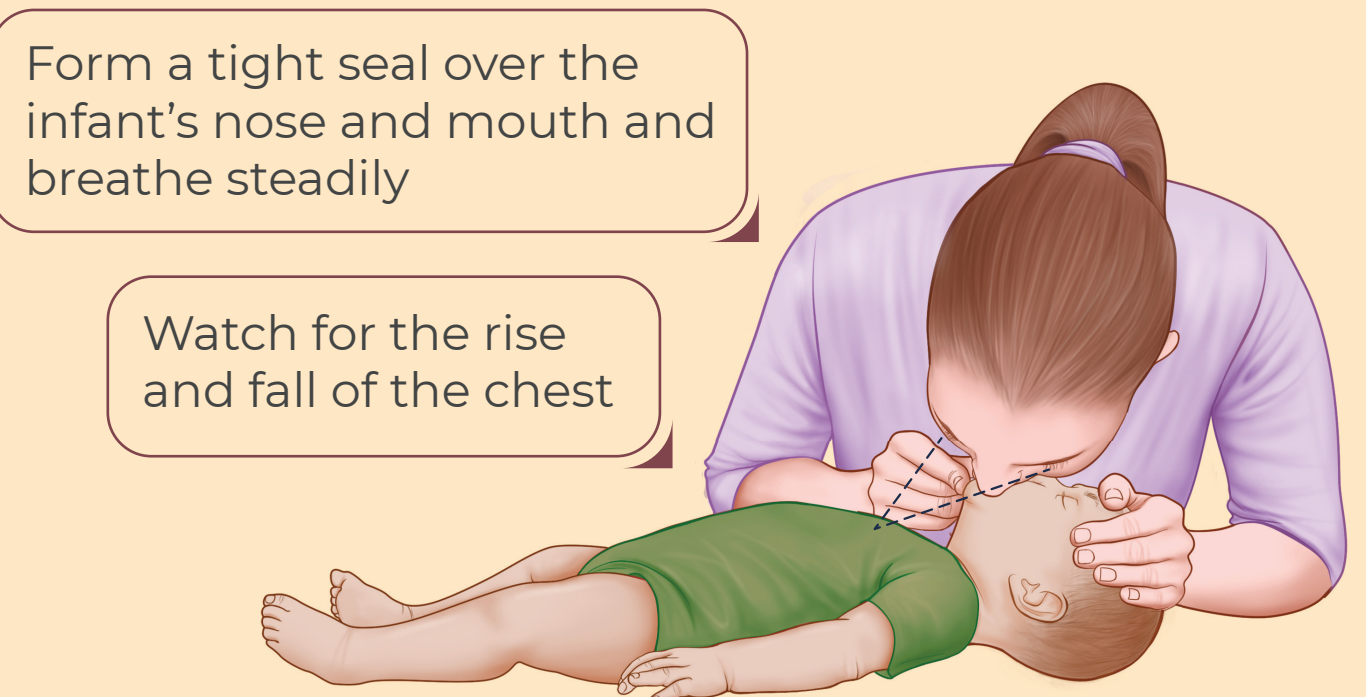
30 compressions 

2 rescue breaths 

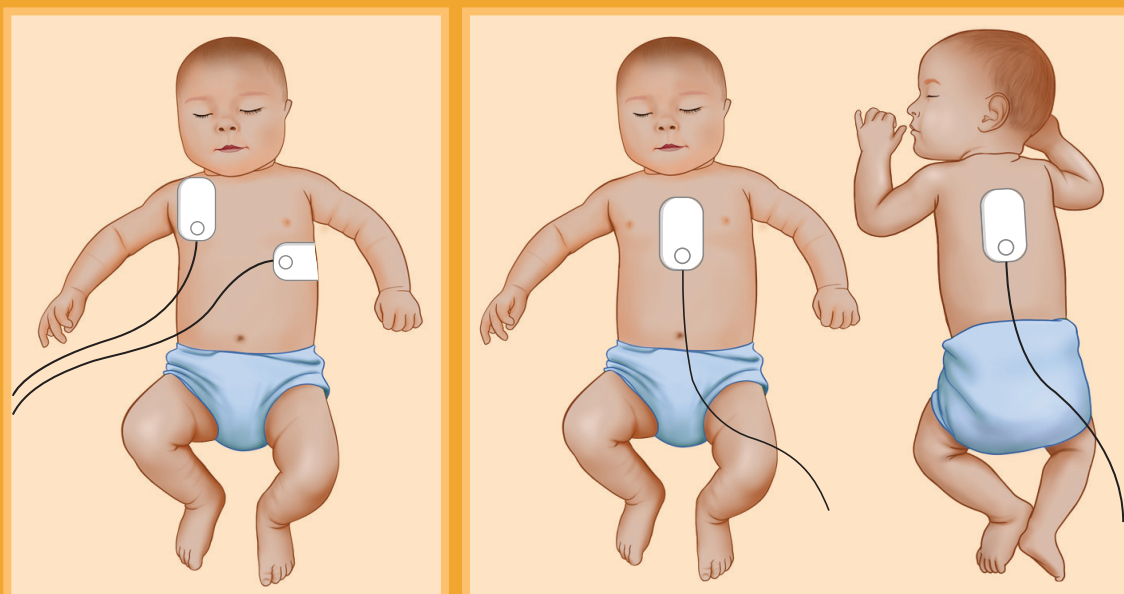
01 Perform 30 compressions moderately hard and fast - at a rate of **100-120** per minute.



02 Perform 2 rescue breaths.



If an AED is available - turn AED on and follow the AED's instructions.



Pad position for male/female infant

Alternate position for male/female infant if the pads would touch

CONTINUE CPR UNTIL THE INFANT BREATHES NORMALLY OR MEDICAL PROFESSIONALS TAKE OVER

If the infant resumes normal breathing then hold them in the *recovery position* and monitor their breathing until an ambulance arrives.

Recovery position

Cradle the infant in your arms with their head tilted downwards

